



# Cattle on Feed

ISSN: 1948-9080

---

Released January 24, 2020, by the National Agricultural Statistics Service (NASS), Agricultural Statistics Board, United States Department of Agriculture (USDA).

## United States Cattle on Feed Up 2 Percent

**Cattle and calves on feed** for the slaughter market in the United States for feedlots with capacity of 1,000 or more head totaled 12.0 million head on January 1, 2020. The inventory was 2 percent above January 1, 2019. The inventory included 7.37 million steers and steer calves, up 1 percent from the previous year. This group accounted for 62 percent of the total inventory. Heifers and heifer calves accounted for 4.59 million head, up 4 percent from 2019.

**Placements** in feedlots during December totaled 1.83 million head, 3 percent above 2019. Net placements were 1.76 million head. During December, placements of cattle and calves weighing less than 600 pounds were 465,000 head, 600-699 pounds were 455,000 head, 700-799 pounds were 413,000 head, 800-899 pounds were 295,000 head, 900-999 pounds were 95,000 head, and 1,000 pounds and greater were 105,000 head.

**Marketings** of fed cattle during December totaled 1.83 million head, 5 percent above 2018.

**Other disappearance** totaled 67,000 head during December, 11 percent below 2018.

**Cattle on Feed Inventory, Placements, Marketings, and Other Disappearance on 1,000+ Capacity Feedlots – United States: January 1, 2019 and 2020**

[December preceding year]

Item	Number		Percent of previous year
	2019	2020	
	(1,000 head)	(1,000 head)	(percent)
On feed December 1 .....	11,739	12,031	102
Placed on feed during December .....	1,767	1,828	103
Fed cattle marketed during December .....	1,741	1,834	105
Other disappearance during December .....	75	67	89
On feed January 1 .....	11,690	11,958	102

**Cattle on Feed Inventory, Placements, Marketings, and Other Disappearance on 1,000+ Capacity Feedlots – United States: December 1, 2018 and 2019**

Item	Number		Percent of previous year
	2018	2019	
	(1,000 head)	(1,000 head)	(percent)
On feed November 1 .....	11,692	11,816	101
Placed on feed during November .....	1,996	2,093	105
Fed cattle marketed during November .....	1,869	1,813	97
Other disappearance during November .....	80	65	81
On feed December 1 .....	11,739	12,031	102

**Cattle on Feed by Class on 1,000+ Capacity Feedlots – United States: January 1, 2019 and 2020**

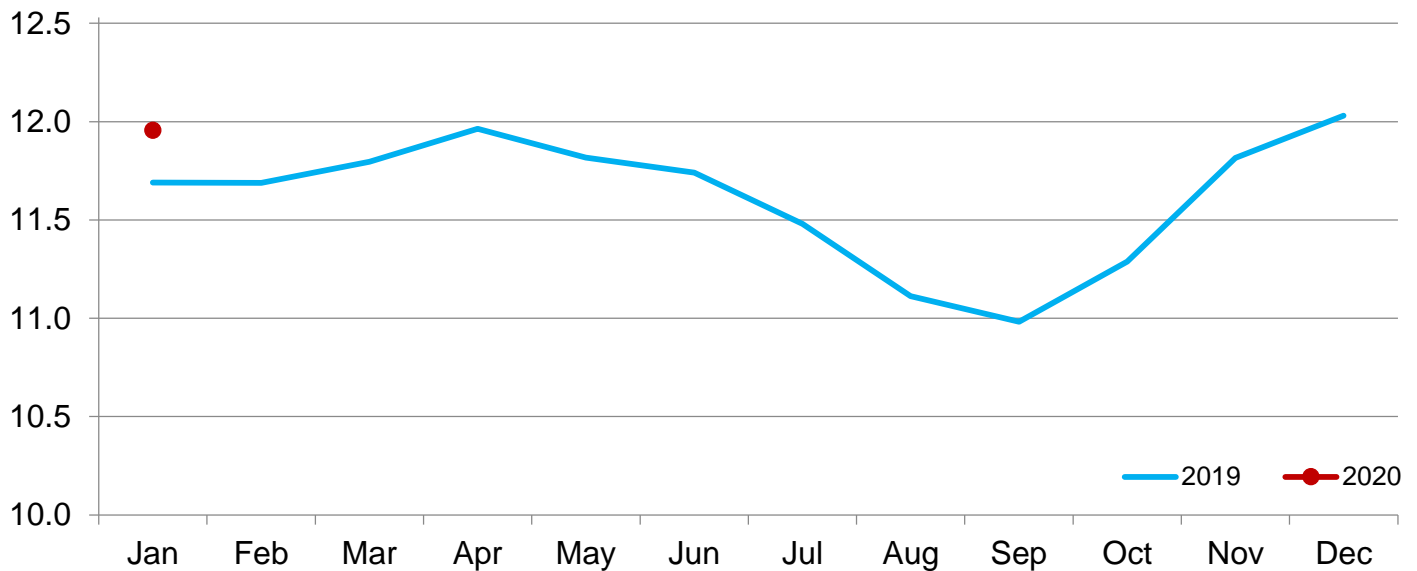
Item	Number		Percent of	
	2019	2020	previous year	inventory
	(1,000 Head)	(1,000 Head)	(percent)	(percent)
Class on feed January 1				
Steers and steer calves .....	7,280	7,373	101	62
Heifers and heifer calves .....	4,410	4,585	104	38

**Cattle on Feed Inventory on 1,000+ Capacity Feedlots by Month – States and United States: 2019 and 2020**

State	January 1, 2019	December 1, 2019	January 1, 2020		
			Number	Percent of previous year	Percent of previous month
	(1,000 head)	(1,000 head)	(1,000 head)	(percent)	(percent)
Arizona .....	295	256	253	86	99
California .....	535	550	540	101	98
Colorado .....	1,010	1,100	1,090	108	99
Idaho .....	280	300	300	107	100
Iowa .....	690	690	670	97	97
Kansas .....	2,330	2,430	2,420	104	100
Minnesota .....	155	140	135	87	96
Nebraska .....	2,560	2,480	2,460	96	99
Oklahoma .....	315	325	330	105	102
South Dakota .....	245	250	245	100	98
Texas .....	2,730	2,930	2,960	108	101
Washington .....	225	240	235	104	98
Other States .....	320	340	320	100	94
United States .....	11,690	12,031	11,958	102	99

**Cattle on Feed Inventory on 1,000+ Capacity Feedlots – United States**

Million head

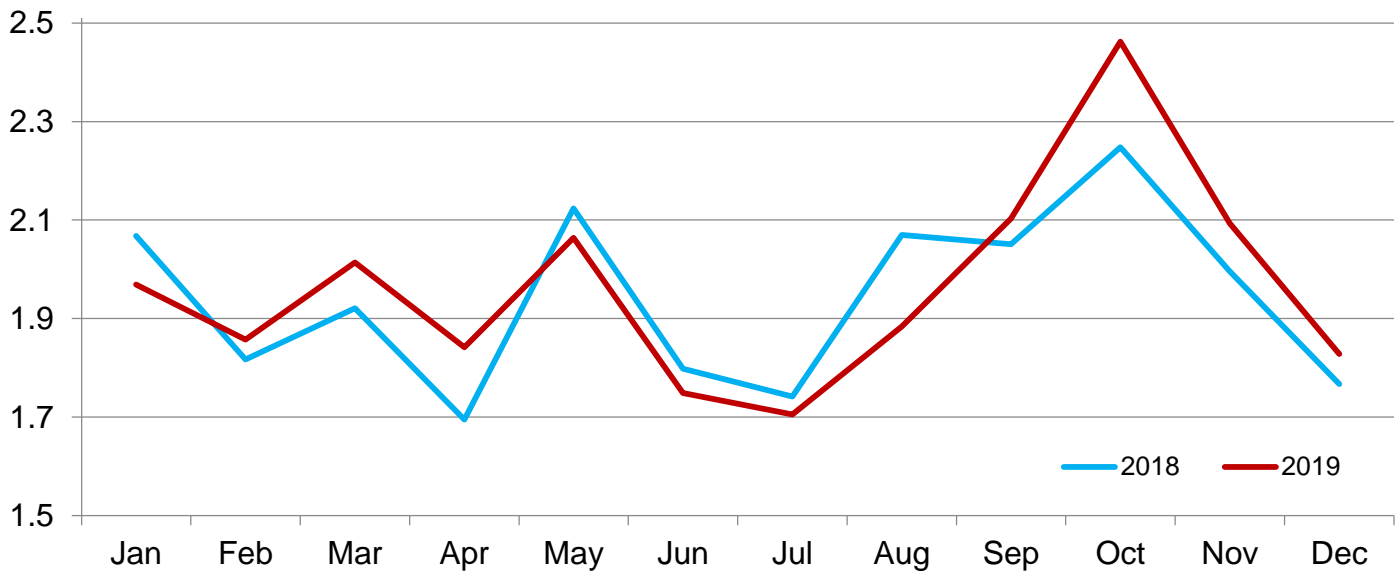


**Cattle Placed on Feed on 1,000+ Capacity Feedlots by Month – States and United States: 2018 and 2019**

State	During December 2018 (1,000 head)	During November 2019 (1,000 head)	During December 2019		
			Number (1,000 head)	Percent of previous year (percent)	Percent of previous month (percent)
Arizona .....	31	27	25	81	93
California .....	73	64	64	88	100
Colorado .....	145	185	140	97	76
Idaho .....	33	56	36	109	64
Iowa .....	85	110	72	85	65
Kansas .....	395	415	435	110	105
Minnesota .....	12	25	10	83	40
Nebraska .....	410	520	465	113	89
Oklahoma .....	36	58	59	164	102
South Dakota .....	50	75	40	80	53
Texas .....	410	465	410	100	88
Washington .....	27	42	32	119	76
Other States .....	60	51	40	67	78
United States .....	1,767	2,093	1,828	103	87

**Number of Cattle Placed on 1,000+ Capacity Feedlots – United States**

Million head



## Cattle Placed on Feed by Weight Group on 1,000+ Capacity Feedlots and Month – States and United States: 2018 and 2019

State	During December 2018							
	Under 600 lbs	600-699 lbs	700-799 lbs	800-899 lbs	900+ lbs <sup>1</sup>	900-999 lbs	1,000+ lbs	Total
	(1,000 head)	(1,000 head)	(1,000 head)	(1,000 head)	(1,000 head)	(1,000 head)	(1,000 head)	(1,000 head)
Colorado .....	35	40	30	25	15	(D)	(D)	145
Kansas .....	55	95	130	75	40	(D)	(D)	395
Nebraska .....	50	110	90	80	80	(D)	(D)	410
Texas .....	155	105	85	50	15	(D)	(D)	410
Other States ...	150	110	67	55	25	(D)	(D)	407
United States ..	445	460	402	285	(X)	90	85	1,767
State	During November 2019							
	Under 600 lbs	600-699 lbs	700-799 lbs	800-899 lbs	900+ lbs <sup>1</sup>	900-999 lbs	1,000+ lbs	Total
	(1,000 head)	(1,000 head)	(1,000 head)	(1,000 head)	(1,000 head)	(1,000 head)	(1,000 head)	(1,000 head)
Colorado .....	60	40	30	30	25	(D)	(D)	185
Kansas .....	60	105	125	80	45	(D)	(D)	415
Nebraska .....	100	120	100	90	110	(D)	(D)	520
Texas .....	200	120	85	45	15	(D)	(D)	465
Other States ...	200	115	83	65	45	(D)	(D)	508
United States ..	620	500	423	310	(X)	130	110	2,093
State	During December 2019							
	Under 600 lbs	600-699 lbs	700-799 lbs	800-899 lbs	900+ lbs <sup>1</sup>	900-999 lbs	1,000+ lbs	Total
	(1,000 head)	(1,000 head)	(1,000 head)	(1,000 head)	(1,000 head)	(1,000 head)	(1,000 head)	(1,000 head)
Colorado .....	30	35	35	25	15	(D)	(D)	140
Kansas .....	65	110	135	80	45	(D)	(D)	435
Nebraska .....	50	110	105	100	100	(D)	(D)	465
Texas .....	170	110	75	40	15	(D)	(D)	410
Other States ...	150	90	63	50	25	(D)	(D)	378
United States ..	465	455	413	295	(X)	95	105	1,828

(D) Withheld to avoid disclosing data for individual operations.

(X) Not applicable.

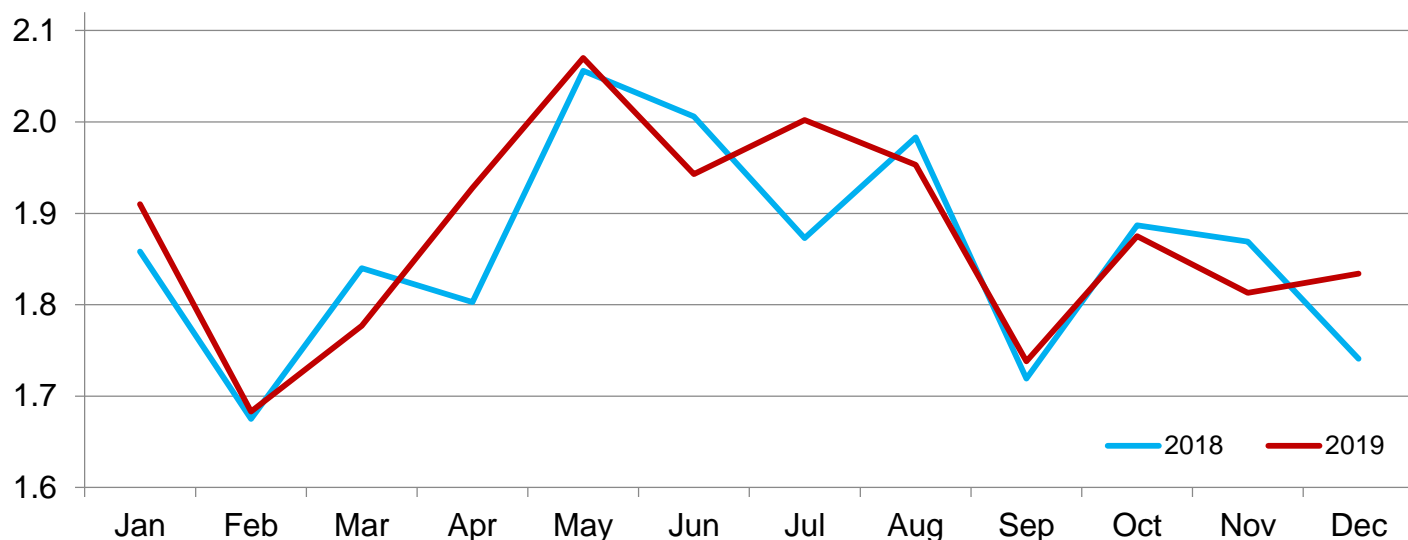
<sup>1</sup> The 900 pounds and greater weight group is the sum of 900-999 pounds and 1,000 pounds and greater weight groups.

## Cattle Marketed on 1,000+ Capacity Feedlots by Month – States and United States: 2018 and 2019

State	During December 2018	During November 2019	During December 2019		
			Number	Percent of previous year	Percent of previous month
			(1,000 head)	(percent)	(percent)
Arizona .....	24	26	27	113	104
California .....	70	47	70	100	149
Colorado .....	140	150	145	104	97
Idaho .....	36	44	35	97	80
Iowa .....	92	76	90	98	118
Kansas .....	410	395	430	105	109
Minnesota .....	16	14	14	88	100
Nebraska .....	430	475	470	109	99
Oklahoma .....	45	57	52	116	91
South Dakota .....	40	64	43	108	67
Texas .....	345	390	365	106	94
Washington .....	36	35	36	100	103
Other States .....	57	40	57	100	143
United States .....	1,741	1,813	1,834	105	101

## Number of Cattle Marketed on 1,000+ Capacity Feedlots – United States

Million head



### Cattle Other Disappearance on 1,000+ Capacity Feedlots by Month – States and United States: 2018 and 2019

State	During December 2018 (1,000 head)	During November 2019 (1,000 head)	During December 2019		
			Number (1,000 head)	Percent of previous year (percent)	Percent of previous month (percent)
Arizona .....	1	1	1	100	100
California .....	3	7	4	133	57
Colorado .....	5	5	5	100	100
Idaho .....	2	2	1	50	50
Iowa .....	3	4	2	67	50
Kansas .....	15	10	15	100	150
Minnesota .....	1	1	1	100	100
Nebraska .....	20	15	15	75	100
Oklahoma .....	1	1	2	200	200
South Dakota .....	5	1	2	40	200
Texas .....	15	15	15	100	100
Washington .....	1	2	1	100	50
Other States .....	3	1	3	100	300
United States .....	75	65	67	89	103

**Cattle on Feed by Class on 1,000+ Capacity Feedlots by Quarter – States and United States: 2019 and 2020**

State	Steers and steer calves			Heifers and heifer calves		
	Jan 1, 2019	Oct 1, 2019	Jan 1, 2020	Jan 1, 2019	Oct 1, 2019	Jan 1, 2020
	(1,000 Head)	(1,000 Head)	(1,000 Head)	(1,000 Head)	(1,000 Head)	(1,000 Head)
Arizona .....	285	248	248	10	5	5
California .....	465	455	465	70	70	75
Colorado .....	570	520	585	440	470	505
Idaho .....	185	180	185	95	95	115
Iowa .....	510	440	490	180	200	180
Kansas .....	1,270	1,270	1,300	1,060	1,110	1,120
Minnesota .....	130	90	115	25	15	20
Nebraska .....	1,570	1,360	1,490	990	910	970
Oklahoma .....	180	175	185	135	140	145
South Dakota .....	135	120	140	110	90	105
Texas .....	1,640	1,690	1,830	1,090	1,100	1,130
Washington .....	140	130	135	85	95	100
Other States .....	200	190	205	120	120	115
United States .....	7,280	6,868	7,373	4,410	4,420	4,585

## Terms and Definitions of Cattle on Feed Estimates

**Cattle on feed** are steers and heifers being fed a ration of grain, silage, hay and/or protein supplement for slaughter market that are expected to produce a carcass that will grade select or better. It excludes cattle being "backgrounded only" for later sale as feeders or later placement in another feedlot.

**Placements** are steers and heifers put into a feedlot, fed a ration which will produce a carcass that will grade select or better, and are intended for the slaughter market.

**Marketings** are steers and heifers shipped out of feedlots to a slaughter market.

**Other disappearance** includes death loss, movement from feedlots to pasture, and shipments to other feedlots for further feeding.

## Statistical Methodology

**Survey Procedures:** During January and July all known feedlots in the United States with capacity of 1,000 or more head are surveyed to provide data for cattle on feed estimates. During the other months, all known feedlots from 16 States are surveyed. The 16 States account for approximately 98 percent of the cattle on feed in feedlots with capacity of 1,000 or more head. Individual State estimates are published monthly for 12 of the 16 States. Data collected from the remaining 4 States are used to establish the "Other States" estimates. These 4 States include Illinois, New Mexico, Oregon, and Wyoming. The "Other States" category represents all cattle on feed with a capacity of 1,000 or more head for the rest of the United States.

**Estimating Procedures:** These cattle on feed estimates were prepared by the Agricultural Statistics Board after reviewing recommendations and analysis submitted by Regional Field Offices. Regional and State survey data were reviewed for reasonableness with each other and with estimates from the previous month when establishing the current estimates.

**Revision Policy:** Revisions to previous estimates are made to improve month to month relationships. Estimates for the previous month are subject to revision in all States each month when current estimates are made. In February, all monthly estimates for the previous year, and the number of feedlots and annual marketings from two years ago are reviewed and subject to revisions. The reviews are primarily based on slaughter data, state check-off or brand data, and any other data that may have been received after the original estimate was made. Estimates will also be reviewed after data from the *Census of Agriculture* are available. No revisions will be made after that date and estimates become final.

**Reliability:** Since all 1,000+ capacity cattle on feed operators in every State are not included in the monthly survey, survey estimates are subject to sampling variability. Survey results are also subject to non-sampling errors such as omissions, duplications, and mistakes in reporting, recording, and processing the data. The effects of these errors cannot be measured directly. They are minimized through rigid quality controls in the data collection process and through a careful review of all reported data for consistency and reasonableness.

To assist users in evaluating the reliability of estimates in this report, the "**Root Mean Square Error**" is shown for selected items in the table on the following page. The "Root Mean Square Error" is a statistical measure based on past performance and is computed using the differences between first and latest estimates. The "Root Mean Square Error" for cattle on feed inventory estimates over the past 24 months is 0.0 percent. This means that chances are 2 out of 3 that the final estimate will not be above or below the current estimate of 12.0 million head by more than 0.0 percent. Chances are 9 out of 10 that the difference will not exceed 0.1 percent.

The table on the following page shows a 24 month record of the range of differences between first and latest estimates for selected items. Using estimates of number on feed as an example, changes between the first estimate and the latest estimate during the past 24 months have averaged 2,000 head, ranging from 0 to 15,000 head. During this period the initial estimate has been above the latest estimate 2 times and has been below the latest estimate 3 times. This does not imply that the initial estimate is likely to understate or overstate final inventory.



## Reliability of Monthly Cattle on Feed Estimates

[Based on data for the past 24 months]

Item	Root mean square error	90 percent confidence level	Difference between first and latest estimate				
			Average	Smallest	Largest	Months	
						Below latest	Above latest
	(percent)	(percent)	(1,000)	(1,000)	(1,000)	(number)	(number)
Number on feed .....	0.0	0.1	2	0	15	3	2
Placements .....	0.2	0.4	2	0	15	3	2
Marketings .....	0.0	0.0	0	0	2	0	1

## Information Contacts

Listed below are the commodity specialists in the Livestock Branch of the National Agricultural Statistics Service to contact for additional information. E-mail inquiries may be sent to [nass@usda.gov](mailto:nass@usda.gov).

Travis Averill, Chief, Livestock Branch .....	(202) 692-0069
Scott Hollis, Head, Livestock Section .....	(202) 690-2424
Sherry Bertramsen – Livestock Slaughter .....	(202) 690-8632
Holly Brenize – Sheep and Goats .....	(202) 720-0585
Heidi Lanouette – Cattle, Cattle on Feed .....	(202) 720-3040
Mike Miller – Milk Production and Milk Cows .....	(202) 720-3278
Suzanne Richards – Dairy Products .....	(202) 720-4448
Seth Riggins – Hogs and Pigs .....	(202) 720-3106

## Access to NASS Reports

For your convenience, you may access NASS reports and products the following ways:

- All reports are available electronically, at no cost, on the NASS web site: [www.nass.usda.gov](http://www.nass.usda.gov)
- Both national and state specific reports are available via a free e-mail subscription. To set-up this free subscription, visit [www.nass.usda.gov](http://www.nass.usda.gov) and click on “National” or “State” in upper right corner above “search” box to create an account and select the reports you would like to receive.
- Cornell’s Mann Library has launched a new website housing NASS’s and other agency’s archived reports. The new website, <https://usda.library.cornell.edu>. All email subscriptions containing reports will be sent from the new website, <https://usda.library.cornell.edu>. To continue receiving the reports via e-mail, you will have to go to the new website, create a new account and re-subscribe to the reports. If you need instructions to set up an account or subscribe, they are located at: <https://usda.library.cornell.edu/help>. You should whitelist [notifications@usda-esmis.library.cornell.edu](mailto:notifications@usda-esmis.library.cornell.edu) in your email client to avoid the emails going into spam/junk folders.

For more information on NASS surveys and reports, call the NASS Agricultural Statistics Hotline at (800) 727-9540, 7:30 a.m. to 4:00 p.m. ET, or e-mail: [nass@usda.gov](mailto:nass@usda.gov).

The U.S. Department of Agriculture (USDA) prohibits discrimination against its customers, employees, and applicants for employment on the basis of race, color, national origin, age, disability, sex, gender identity, religion, reprisal, and where applicable, political beliefs, marital status, familial or parental status, sexual orientation, or all or part of an individual's income is derived from any public assistance program, or protected genetic information in employment or in any program or activity conducted or funded by the Department. (Not all prohibited bases will apply to all programs and/or employment activities.)

If you wish to file a Civil Rights program complaint of discrimination, complete the [USDA Program Discrimination Complaint Form](#) (PDF), found online at [www.ascr.usda.gov/filing-program-discrimination-complaint-usda-customer](http://www.ascr.usda.gov/filing-program-discrimination-complaint-usda-customer), or at any USDA office, or call (866) 632-9992 to request the form. You may also write a letter containing all of the information requested in the form. Send your completed complaint form or letter to us by mail at U.S. Department of Agriculture, Director, Office of Adjudication, 1400 Independence Avenue, S.W., Washington, D.C. 20250-9410, by fax (202) 690-7442 or email at [program.intake@usda.gov](mailto:program.intake@usda.gov).

# USDA's Agricultural Outlook Forum

## 96th Annual The Innovation Imperative: *Shaping the Future of Agriculture*

February 21-22, 2020 • Crystal Gateway Marriott Hotel, Arlington, Virginia

## The 2020 Agricultural Outlook Forum

### “Program at a Glance”

Join us February 20-21, 2020  
Crystal Gateway Marriott Hotel Arlington, Virginia

Register [Here](#)

## The Agricultural Outlook Forum

- USDA's largest annual gathering and the agricultural sector's premiere event
- Brings together more than 1,500 sector leaders and professionals to connect and discuss current and key emerging issues in agriculture
- More than 30 sessions covering commodity markets and outlook, international trade, agricultural policy, as well as cutting edge topics that will influence the future of agriculture



**For More Information**, please contact the Forum Coordinator [Mirvat Sewadeh](#) at 202-720-5447