



---

Released October 25, 2019, by the National Agricultural Statistics Service (NASS), Agricultural Statistics Board, United States Department of Agriculture (USDA).

## United States Cattle on Feed Down 1 Percent

**Cattle and calves on feed** for the slaughter market in the United States for feedlots with capacity of 1,000 or more head totaled 11.3 million head on October 1, 2019. The inventory was 1 percent below October 1, 2018. The inventory included 6.87 million steers and steer calves, down 3 percent from the previous year. This group accounted for 61 percent of the total inventory. Heifers and heifer calves accounted for 4.41 million head, up 2 percent from 2018.

**Placements** in feedlots during September totaled 2.09 million head, 2 percent above 2018. Net placements were 2.03 million head. During September, placements of cattle and calves weighing less than 600 pounds were 420,000 head, 600-699 pounds were 355,000 head, 700-799 pounds were 460,000 head, 800-899 pounds were 475,000 head, 900-999 pounds were 273,000 head, and 1,000 pounds and greater were 110,000 head.

**Marketings** of fed cattle during September totaled 1.74 million head, 1 percent above 2018.

**Other disappearance** totaled 59,000 head during September, 4 percent above 2018.

**Cattle on Feed Inventory, Placements, Marketings, and Other Disappearance on 1,000+ Capacity Feedlots – United States: October 1, 2018 and 2019**

Item	Number		Percent of previous year
	2018	2019	
	(1,000 head)	(1,000 head)	(percent)
On feed September 1 .....	11,125	10,982	99
Placed on feed during September .....	2,051	2,093	102
Fed cattle marketed during September .....	1,719	1,738	101
Other disappearance during September .....	57	59	104
On feed October 1 .....	11,400	11,278	99

**Cattle on Feed Inventory, Placements, Marketings, and Other Disappearance on 1,000+ Capacity Feedlots – United States: September 1, 2018 and 2019**

Item	Number		Percent of previous year
	2018	2019	
	(1,000 head)	(1,000 head)	(percent)
On feed August 1 .....	11,093	11,112	100
Placed on feed during August .....	2,070	1,884	91
Fed cattle marketed during August .....	1,983	1,953	98
Other disappearance during August .....	55	61	111
On feed September 1 .....	11,125	10,982	99

**Cattle on Feed by Class on 1,000+ Capacity Feedlots – United States: October 1, 2018 and 2019**

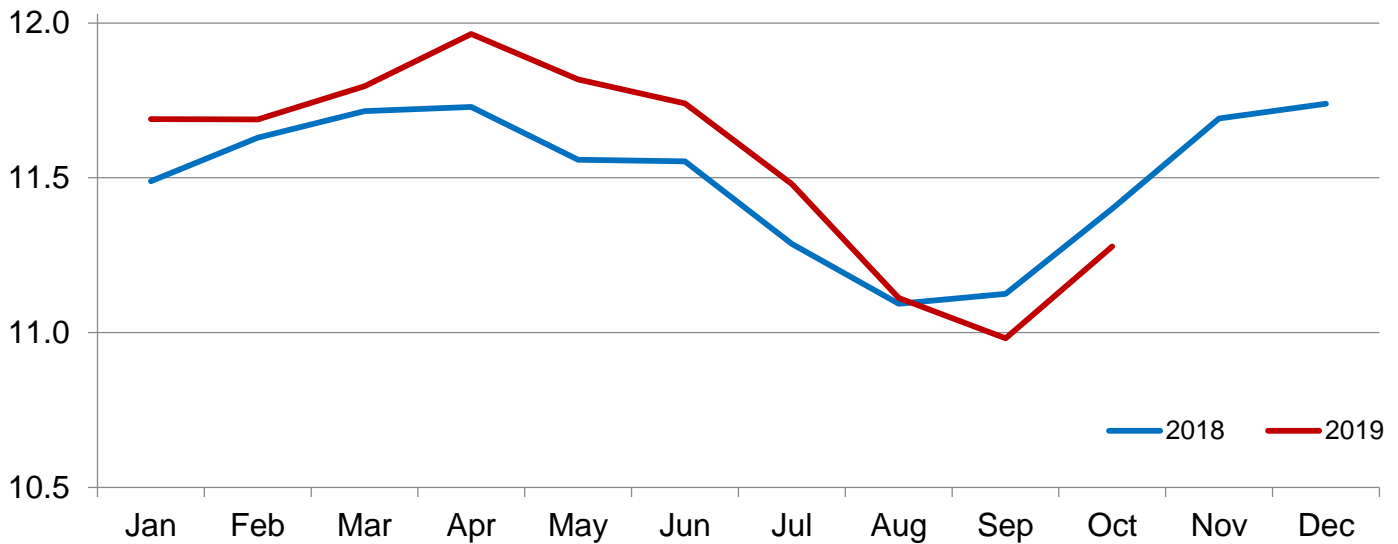
Item	Number		Percent of	
	2018	2019	previous year	inventory
	(1,000 Head)	(1,000 Head)	(percent)	(percent)
Class on feed October 1				
Steers and steer calves .....	7,093	6,871	97	61
Heifers and heifer calves .....	4,307	4,407	102	39

**Cattle on Feed Inventory on 1,000+ Capacity Feedlots by Month – States and United States: 2018 and 2019**

State	October 1, 2018	September 1, 2019	October 1, 2019		
			Number	Percent of previous year	Percent of previous month
	(1,000 head)	(1,000 head)	(1,000 head)	(percent)	(percent)
Arizona .....	295	257	253	86	98
California .....	520	530	525	101	99
Colorado .....	980	930	990	101	106
Idaho .....	260	270	275	106	102
Iowa .....	690	630	640	93	102
Kansas .....	2,370	2,340	2,380	100	102
Minnesota .....	130	100	105	81	105
Nebraska .....	2,430	2,160	2,270	93	105
Oklahoma .....	325	315	315	97	100
South Dakota .....	215	205	210	98	102
Texas .....	2,660	2,730	2,780	105	102
Washington .....	220	220	225	102	102
Other States .....	305	295	310	102	105
United States .....	11,400	10,982	11,278	99	103

**Cattle on Feed Inventory on 1,000+ Capacity Feedlots – United States**

Million head

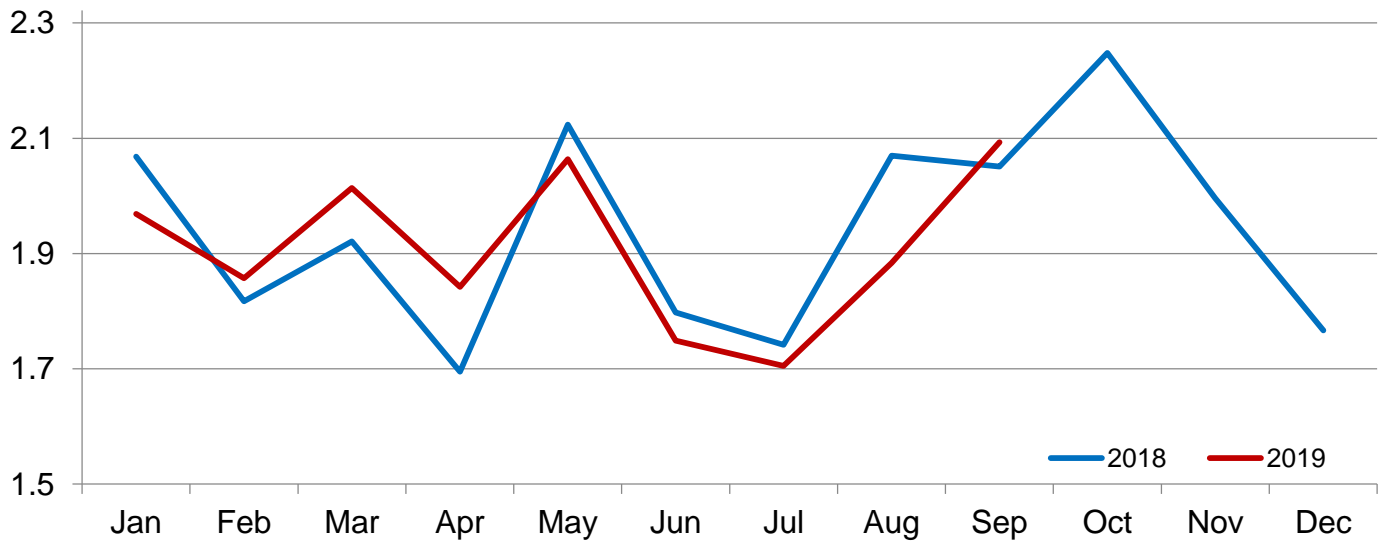


**Cattle Placed on Feed on 1,000+ Capacity Feedlots by Month – States and United States: 2018 and 2019**

State	During September 2018 (1,000 head)	During August 2019 (1,000 head)	During September 2019		
			Number (1,000 head)	Percent of previous year (percent)	Percent of previous month (percent)
Arizona .....	24	21	16	67	76
California .....	48	56	50	104	89
Colorado .....	235	170	240	102	141
Idaho .....	49	44	58	118	132
Iowa .....	89	71	82	92	115
Kansas .....	445	440	435	98	99
Minnesota .....	24	14	22	92	157
Nebraska .....	520	445	530	102	119
Oklahoma .....	55	51	46	84	90
South Dakota .....	59	45	53	90	118
Texas .....	395	435	455	115	105
Washington .....	44	43	46	105	107
Other States .....	64	49	60	94	122
United States .....	2,051	1,884	2,093	102	111

**Cattle Placed on 1000+ Capacity Feedlots – United States**

Million head



**Cattle Placed on Feed by Weight Group on 1,000+ Capacity Feedlots and Month – States and United States: 2018 and 2019**

State	During September 2018							
	Under 600 lbs	600-699 lbs	700-799 lbs	800-899 lbs	900+ lbs <sup>1</sup>	900-999 lbs	1,000+ lbs	Total
	(1,000 head)	(1,000 head)	(1,000 head)	(1,000 head)	(1,000 head)	(1,000 head)	(1,000 head)	(1,000 head)
Colorado .....	30	25	45	70	65	(D)	(D)	235
Kansas .....	65	90	130	100	60	(D)	(D)	445
Nebraska .....	55	55	85	140	185	(D)	(D)	520
Texas .....	145	105	90	45	10	(D)	(D)	395
Other States ...	130	55	80	111	80	(D)	(D)	456
United States ..	425	330	430	466	(X)	280	120	2,051

State	During August 2019							
	Under 600 lbs	600-699 lbs	700-799 lbs	800-899 lbs	900+ lbs <sup>1</sup>	900-999 lbs	1,000+ lbs	Total
	(1,000 head)	(1,000 head)	(1,000 head)	(1,000 head)	(1,000 head)	(1,000 head)	(1,000 head)	(1,000 head)
Colorado .....	25	25	35	45	40	(D)	(D)	170
Kansas .....	60	80	125	120	55	(D)	(D)	440
Nebraska .....	40	40	85	130	150	(D)	(D)	445
Texas .....	165	110	100	50	10	(D)	(D)	435
Other States ...	95	45	79	95	80	(D)	(D)	394
United States ..	385	300	424	440	(X)	230	105	1,884

State	During September 2019							
	Under 600 lbs	600-699 lbs	700-799 lbs	800-899 lbs	900+ lbs <sup>1</sup>	900-999 lbs	1,000+ lbs	Total
	(1,000 head)	(1,000 head)	(1,000 head)	(1,000 head)	(1,000 head)	(1,000 head)	(1,000 head)	(1,000 head)
Colorado .....	30	25	50	70	65	(D)	(D)	240
Kansas .....	60	90	130	100	55	(D)	(D)	435
Nebraska .....	50	60	95	150	175	(D)	(D)	530
Texas .....	160	130	105	50	10	(D)	(D)	455
Other States ...	120	50	80	105	78	(D)	(D)	433
United States ..	420	355	460	475	(X)	273	110	2,093

(D) Withheld to avoid disclosing data for individual operations.

(X) Not applicable.

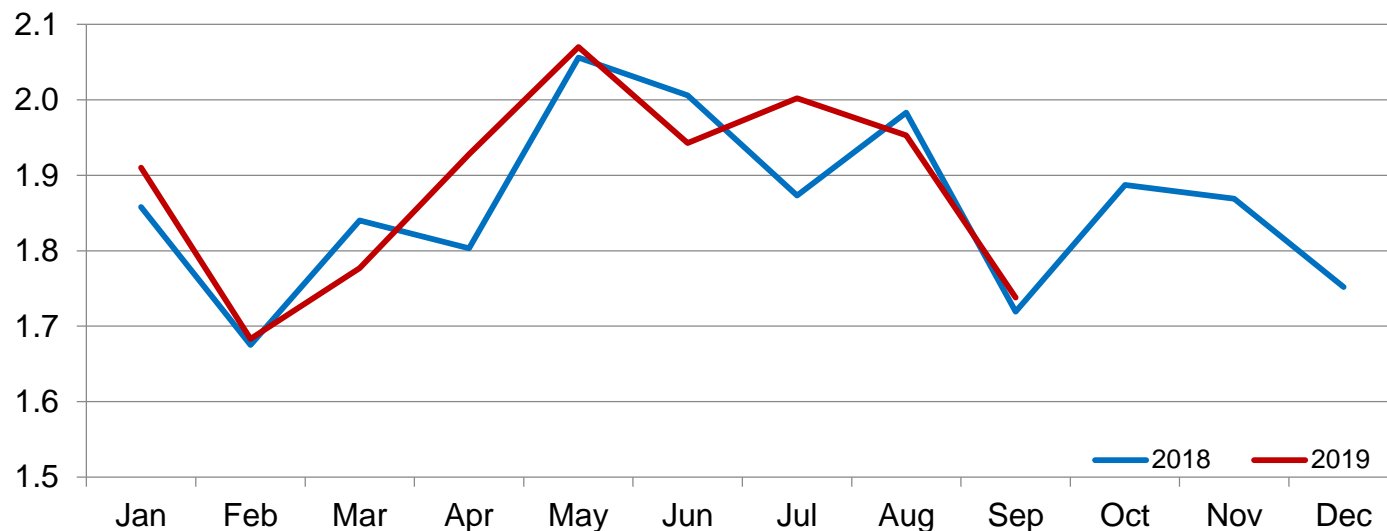
<sup>1</sup> The 900 pounds and greater weight group is the sum of 900-999 pounds and 1,000 pounds and greater weight groups.

**Cattle Marketed on 1,000+ Capacity Feedlots by Month – States and United States: 2018 and 2019**

State	During September 2018	During August 2019	During September 2019		
			Number	Percent of previous year	Percent of previous month
			(1,000 head)	(percent)	(percent)
Arizona .....	23	35	19	83	54
California .....	49	55	50	102	91
Colorado .....	150	205	175	117	85
Idaho .....	39	53	50	128	94
Iowa .....	75	69	70	93	101
Kansas .....	375	430	385	103	90
Minnesota .....	18	23	16	89	70
Nebraska .....	410	460	410	100	89
Oklahoma .....	48	49	44	92	90
South Dakota .....	42	34	46	110	135
Texas .....	405	450	390	96	87
Washington .....	33	47	40	121	85
Other States .....	52	43	43	83	100
United States .....	1,719	1,953	1,738	101	89

## Cattle Marketed on 1,000+ Capacity Feedlots – United States

Million head



### Cattle Other Disappearance on 1,000+ Capacity Feedlots by Month – States and United States: 2018 and 2019

State	During September 2018 (1,000 head)	During August 2019 (1,000 head)	During September 2019		
			Number (1,000 head)	Percent of previous year (percent)	Percent of previous month (percent)
Arizona .....	1	1	1	100	100
California .....	4	6	5	125	83
Colorado .....	5	5	5	100	100
Idaho .....	5	1	3	60	300
Iowa .....	4	2	2	50	100
Kansas .....	10	10	10	100	100
Minnesota .....	1	1	1	100	100
Nebraska .....	10	15	10	100	67
Oklahoma .....	2	2	2	100	100
South Dakota .....	2	1	2	100	200
Texas .....	10	15	15	150	100
Washington .....	1	1	1	100	100
Other States .....	2	1	2	100	200
United States .....	57	61	59	104	97

**Cattle on Feed by Class on 1,000+ Capacity Feedlots by Quarter – States and United States: 2018 and 2019**

State	Steers and steer calves			Heifers and heifer calves		
	Oct 1, 2018	Jul 1, 2019	Oct 1, 2019	Oct 1, 2018	Jul 1, 2019	Oct 1, 2019
	(1,000 Head)	(1,000 Head)	(1,000 Head)	(1,000 Head)	(1,000 Head)	(1,000 Head)
Arizona .....	288	290	251	7	5	2
California .....	465	460	455	55	75	70
Colorado .....	550	520	520	430	510	470
Idaho .....	175	195	180	85	95	95
Iowa .....	500	480	440	190	170	200
Kansas .....	1,220	1,240	1,270	1,150	1,120	1,110
Minnesota .....	105	110	90	25	15	15
Nebraska .....	1,510	1,410	1,360	920	890	910
Oklahoma .....	185	155	175	140	165	140
South Dakota .....	115	130	120	100	80	90
Texas .....	1,650	1,700	1,690	1,010	1,140	1,090
Washington .....	140	140	130	80	95	95
Other States .....	190	180	190	115	110	120
United States .....	7,093	7,010	6,871	4,307	4,470	4,407

## Terms and Definitions of Cattle on Feed Estimates

**Cattle on feed** are steers and heifers being fed a ration of grain, silage, hay and/or protein supplement for slaughter market that are expected to produce a carcass that will grade select or better. It excludes cattle being "backgrounded only" for later sale as feeders or later placement in another feedlot.

**Placements** are steers and heifers put into a feedlot, fed a ration which will produce a carcass that will grade select or better, and are intended for the slaughter market.

**Marketings** are steers and heifers shipped out of feedlots to a slaughter market.

**Other disappearance** includes death loss, movement from feedlots to pasture, and shipments to other feedlots for further feeding.

## Statistical Methodology

**Survey Procedures:** During January and July all known feedlots in the United States with capacity of 1,000 or more head are surveyed to provide data for cattle on feed estimates. During the other months, all known feedlots from 16 States are surveyed. The 16 States account for approximately 98 percent of the cattle on feed in feedlots with capacity of 1,000 or more head. Individual State estimates are published monthly for 12 of the 16 States. Data collected from the remaining 4 States are used to establish the "Other States" estimates. These 4 States include Illinois, New Mexico, Oregon, and Wyoming. The "Other States" category represents all cattle on feed with a capacity of 1,000 or more head for the rest of the United States.

**Estimating Procedures:** These cattle on feed estimates were prepared by the Agricultural Statistics Board after reviewing recommendations and analysis submitted by Regional Field Offices. Regional and State survey data were reviewed for reasonableness with each other and with estimates from the previous month when establishing the current estimates.

**Revision Policy:** Revisions to previous estimates are made to improve month to month relationships. Estimates for the previous month are subject to revision in all States each month when current estimates are made. In February, all monthly estimates for the previous year, and the number of feedlots and annual marketings from two years ago are reviewed and subject to revisions. The reviews are primarily based on slaughter data, state check-off or brand data, and any other data that may have been received after the original estimate was made. Estimates will also be reviewed after data from the *Census of Agriculture* are available. No revisions will be made after that date and estimates become final.

**Reliability:** Since all 1,000+ capacity cattle on feed operators in every State are not included in the monthly survey, survey estimates are subject to sampling variability. Survey results are also subject to non-sampling errors such as omissions, duplications, and mistakes in reporting, recording, and processing the data. The effects of these errors cannot be measured directly. They are minimized through rigid quality controls in the data collection process and through a careful review of all reported data for consistency and reasonableness.

To assist users in evaluating the reliability of estimates in this report, the "**Root Mean Square Error**" is shown for selected items in the table on the following page. The "Root Mean Square Error" is a statistical measure based on past performance and is computed using the differences between first and latest estimates. The "Root Mean Square Error" for cattle on feed inventory estimates over the past 24 months is 0.0 percent. This means that chances are 2 out of 3 that the final estimate will not be above or below the current estimate of 11.3 million head by more than 0.0 percent. Chances are 9 out of 10 that the difference will not exceed 0.0 percent.

The table on the following page shows a 24 month record of the range of differences between first and latest estimates for selected items. Using estimates of number on feed as an example, changes between the first estimate and the latest estimate during the past 24 months have averaged 1,000 head, ranging from 0 to 10,000 head. During this period the initial estimate has been above the latest estimate 1 times and has been below the latest estimate 2 times. This does not imply that the initial estimate is likely to understate or overstate final inventory.



## Reliability of Monthly Cattle on Feed Estimates

[Based on data for the past 24 months]

Item	Root mean square error	90 percent confidence level	Difference between first and latest estimate				
			Average	Smallest	Largest	Months	
						Below latest	Above latest
	(percent)	(percent)	(1,000)	(1,000)	(1,000)	(number)	(number)
Number on feed .....	0.0	0.0	1	0	10	2	1
Placements .....	0.1	0.3	1	0	10	2	1
Marketings .....	0.0	0.0	0	0	2	0	1

## Information Contacts

Listed below are the commodity specialists in the Livestock Branch of the National Agricultural Statistics Service to contact for additional information. E-mail inquiries may be sent to [nass@usda.gov](mailto:nass@usda.gov).

Travis Averill, Chief, Livestock Branch .....	(202) 692-0069
Scott Hollis, Head, Livestock Section .....	(202) 690-2424
Sherry Bertramsen – Livestock Slaughter .....	(202) 690-8632
Holly Brenize – Sheep and Goats .....	(202) 720-0585
Donnie Fike – Dairy Products .....	(202) 720-4448
Heidi Lanouette – Cattle, Cattle on Feed .....	(202) 720-3040
Mike Miller – Milk Production and Milk Cows .....	(202) 720-3278
Seth Riggins – Hogs and Pigs .....	(202) 720-3106

## Access to NASS Reports

For your convenience, you may access NASS reports and products the following ways:

- All reports are available electronically, at no cost, on the NASS web site: [www.nass.usda.gov](http://www.nass.usda.gov)
- Both national and state specific reports are available via a free e-mail subscription. To set-up this free subscription, visit [www.nass.usda.gov](http://www.nass.usda.gov) and click on “National” or “State” in upper right corner above “search” box to create an account and select the reports you would like to receive.
- Cornell’s Mann Library has launched a new website housing NASS’s and other agency’s archived reports. The new website, <https://usda.library.cornell.edu>. All email subscriptions containing reports will be sent from the new website, <https://usda.library.cornell.edu>. To continue receiving the reports via e-mail, you will have to go to the new website, create a new account and re-subscribe to the reports. If you need instructions to set up an account or subscribe, they are located at: <https://usda.library.cornell.edu/help>. You should whitelist [notifications@usda-esmis.library.cornell.edu](mailto:notifications@usda-esmis.library.cornell.edu) in your email client to avoid the emails going into spam/junk folders.

For more information on NASS surveys and reports, call the NASS Agricultural Statistics Hotline at (800) 727-9540, 7:30 a.m. to 4:00 p.m. ET, or e-mail: [nass@nass.usda.gov](mailto:nass@nass.usda.gov).

The U.S. Department of Agriculture (USDA) prohibits discrimination against its customers, employees, and applicants for employment on the basis of race, color, national origin, age, disability, sex, gender identity, religion, reprisal, and where applicable, political beliefs, marital status, familial or parental status, sexual orientation, or all or part of an individual's income is derived from any public assistance program, or protected genetic information in employment or in any program or activity conducted or funded by the Department. (Not all prohibited bases will apply to all programs and/or employment activities.)

If you wish to file a Civil Rights program complaint of discrimination, complete the [USDA Program Discrimination Complaint Form](#) (PDF), found online at [www.ascr.usda.gov/filing-program-discrimination-complaint-usda-customer](http://www.ascr.usda.gov/filing-program-discrimination-complaint-usda-customer), or at any USDA office, or call (866) 632-9992 to request the form. You may also write a letter containing all of the information requested in the form. Send your completed complaint form or letter to us by mail at U.S. Department of Agriculture, Director, Office of Adjudication, 1400 Independence Avenue, S.W., Washington, D.C. 20250-9410, by fax (202) 690-7442 or email at [program.intake@usda.gov](mailto:program.intake@usda.gov).